

The Working  
Holiday Club™  
WORK TRAVEL VOLUNTEER

# LIVE WORK PLAY UK



[www.theworkingholidayclub.com](http://www.theworkingholidayclub.com)



1300 295 579





## WHAT DO I GET?

Our Live Work Play UK pack provides everything you need to get started on your working holiday adventure.

We have travel flexible jobs as well as live-in contract positions available in London and across the UK countryside. Our package is valid for up to 24 months and during this time you can swap between our different programs as often as you'd like.

Each program is geared towards a different type of working holiday experience to help you get the most out of your UK adventure.



### OPTION 1

#### JUMPSTART LONDON

- ✓ Hospitality or Labouring jobs
- ✓ Shared housing & Zone 1 rooms
- ✓ Travel Flexible commitments



### OPTION 2

#### BED & BARS UK

- ✓ Bar jobs in London & UK
- ✓ On-site accommodation
- ✓ 4-6 month commitment



### OPTION 3

#### ADVENTURE CAMPS

- ✓ Work in adventure camp in UK
- ✓ Onsite staff accommodation
- ✓ 3 month commitment



### OPTION 4

#### LIVE-IN HOTEL UK

- ✓ Job in Castle style Hotel - UK
- ✓ Onsite staff accommodation
- ✓ 6 month commitment

To apply go to



[www.theworkingholidayclub.com](http://www.theworkingholidayclub.com)





# UK YOUTH MOBILITY VISA

**Guaranteed UK Work Visa for 24 months**

## TO QUALIFY

- ✓ Aged 18 - 31
- ✓ Hold an eligible passport
- ✓ Have no dependants
- ✓ Must be your first visa
- ✓ No criminal convictions\*

\*In the event that you have had Criminal conviction in the past it must be older than 12 months ago

## VISA COSTS:

- ✓ Proof of funds £2530
- ✓ Visa application fee £244
- ✓ Immigration Healthcare Surcharge (IHS) £940 GB

The full Uk Live, Work & Play cost is \$1399 which includes TWHC processing the visa on your behalf. If you would like to apply for the work visa in your own capacity we can offer a \$200 discount on the programme fee.

To apply go to



[www.theworkingholidayclub.com](http://www.theworkingholidayclub.com)





# UK LIVE WORK PLAY ESSENTIALS

## INCLUDED WITH ALL 4 OPTIONS

- ✓ National Insurance number
- ✓ UK bank account
- ✓ UK SIM card
- ✓ Ongoing support in the UK
- ✓ Available to use 24 months
- ✓ Access to closed Facebook groups
- ✓ Discounted hostel stays
- ✓ Discounted Bogan Bingo events
- ✓ London Pub Crawl + London Walking Tour
- ✓ Contiki & TWHC events at Belushi's
- ✓ Discounts on Contiki + Stoke Travel trips

**contiki**  
TRAVEL. TOGETHER.

THE  
**STOKE**  
TRAVEL  
CO.



To apply go to



[www.theworkingholidayclub.com](http://www.theworkingholidayclub.com)





**OPTION 1**

# JUMPSTART LONDON

**Our Jumpstart London pack is the most popular program for travellers wanting to be based in London** – and the most travel flexible option out of all of our programmes.

With our guaranteed jobs, you can book as many shifts as you like and travel as often you like. Our additional job options are based on interviews and have 4-6 month lock in contracts. If you want to be in London with a full-time job role, maximise savings, and travel later.

Jumpstart accommodation includes London City Rooms, Alfred Hitchcock Hotel Rooms & Shared Housing. All job and accommodation options are in London.

## LONDON INCLUSIONS

- ✓ Job guarantee pre-departure
- ✓ Bed guarantee pre-departure
- ✓ Travel flexible accommodation
- ✓ Weekly or fortnightly notice periods
- ✓ UK live work play essentials pack
- ✓ Contikit tour discounts
- ✓ Employment training
- ✓ Additional Job opportunities
- ✓ Staff social events
- ✓ Great for friends, couples & singles
- ✓ Wages from £11- £16 per hour

LONDON HOUSING



TRAVEL FRIENDLY JOBS



UP TO £16 AN HOUR



**Perk**



**Travel us much as you like without losing your job!**





## OPTION 1

# JUMPSTART LONDON JOB OPTIONS



## INDOOR HOTEL EVENTS

**Position:** F.O.H. F&B Attendant

**Job Type:** Flexible

**Job Offer:** Pre-departure

**Wages:** £11-14/hour + holiday pay

**Employers:** Central London Hotels

**Experience:** Entry Level

**Training:** Provided

Work as many hours as you want, and be paid hourly. Early shifts, late shifts, or even doubles



## OUTDOOR EVENTS

**Position:** Labourer

**Job Type:** Flexible

**Wages:** £12.34/hr to £16.00/hr

**Location:** Central London

**Experience:** Entry level - Must be physically strong and fit to be eligible for this position.

**Training:** Provided

Work doing manual labour for major festivals, concerts, sporting events, movie sets & more



## LABOUR + REMOVALS

**Position:** Labourer

**Job Type:** Flexible

**Wages:** £10/hr Plus overtime available + tips

**Location:** Central London

**Experience:** Entry level - Must be physically strong and fit to be eligible for this position

**Training:** Provided

Work in furniture + office removals in London.



## ZEDEL BRASSERIE

**Position:** Front & Back of House

**Job Type:** 4 Month contract

**Job Offer:** Pre-departure

**Wages:** With Exp: £14 -£16/hr

No Exp: Wages start @ £12.75/hr

**Experience:** All Levels

**Training:** Provided

Located in the heart of Piccadilly, Brasserie Zédel is a grand and bustling Parisian brasserie.



## WOLSELEY GROUP

**Position:** Restaurant staff

**Job Type:** 4 month contract

**Wages:** With Exp: £14 -£16/hr

No Exp: Wages start @ £12.75/hr

**Location:** Central London

**Experience:** All levels

**Training:** Provided

Work in London's most respected all-day café-restaurants. Positions include front and back of house.



## DISHOOM

**Positions:** F.O.H. & B.O.H. roles

**Job Type:** 6 month Contract

**Runner:** From £10.33/hour

**Barback:** From £10.83/hour

**Host:** From £11.95/hour

**Bartenders:** From £12.63/hour

**Server:** From £13.44- £14.55/hour

**Shift lengths:** Av 8 hours shift, guaranteed 38-40 hours/week

To apply go to



[www.theworkingholidayclub.com](http://www.theworkingholidayclub.com)





## OPTION 1

# JUMPSTART LONDON JOB OPTIONS



## LONDON DAY CAMPS

**Position:** Activity Leader  
**Job Type:** 6 Week Contract  
**Start Date:** 23rd July - 18th August  
**Wages:** £440 a week  
**Locations:** London Day Camps +  
**Experience:** Entry Level  
**Training:** Provided  
**Live off site:** TWHC Accommodation  
 Perfect job for the quiet season for Jumpstart London workers.



## RESIDENTIAL SUMMER CAMPS

**Position:** Activity Leader  
**Job Type:** 6 week contract  
**Start Date:** 6th July - 14th August  
**Wages:** £480 a week  
 Free meals, free uniforms  
**Location:** Wiltshire  
**Experience:** Entry Level  
**Live On site:** free accommodation  
 Perfect for quiet season for Jumpstart London workers.



## LONDON CAFE BARISTA

**Position:** Café Barista  
**Job Type:** Contract + Full time  
**Wages:** £11-12.70/hour  
**Location:** London  
**Experience:** Required  
 Barista shifts are spread over 5 days from Monday-Sunday. You will be required to work a mix of morning and afternoon shifts.



## LIVE-IN CARER

**Position:** Personal Assistant  
**Job Type:** Full time - 3 mth min  
**Wages:** £770/week  
 2 weeks on 1 week off  
**Location:** London and UK  
**Experience:** Entry level - must be 21+ with a full clean drivers licence (& can drive manual)  
**Training:** Provided  
 Caring for people with spinal injuries, helping them with their everyday activities.



## NANNY/AU PAIR

**Position:** Nanny/AU Pair  
**Job Type:** 6-12 month contract  
**Wages:** Dependant on role + experience  
**Location:** London + UK  
 (Live-in & Live-out roles available)  
**Experience:** Required - must have experience working with children in some capacity.



## TEACHING ASSISTANT

**Position:** Teaching Assistant  
**Job Type:** Temporary + Full time  
**Wages:** £65-85/day  
**Location:** Central London  
 Working with small groups of children who need extra support in an area, such as literacy or numeracy. This can also include working with children with special educational needs.

To apply go to



[www.theworkingholidayclub.com](http://www.theworkingholidayclub.com)





## OPTION 2

# BED & BARS UK

**If you want to start your working holiday with a live-in bar job in London then this is the right option for you.**

Staff housing is located on site, it's mixed dormitory style accommodation so you'll be living with other Beds & Bars staff members.

Our London + UK Beds & Bar program is best suited to people who know how to start a party, shake up awesome cocktails and create a darn good time to be remembered.

**We are the only provider offering London based live-in bar jobs.**

## INCLUSIONS

- ✓ Zoom job interview
- ✓ Camden, Greenwich, London, Sheperds Bush
- ✓ Bath, Edinburgh & Newquay locations
- ✓ Pay rates start from £11/hour + tips
- ✓ On-site staff housing £105.70 fortnight
- ✓ Staff meal provided while on shift
- ✓ 50% off food & drinks in Beds & Bars sites
- ✓ 50% off Accomodation world wide
- ✓ Minimum 4 months commitment
- ✓ Full training provided on arrival
- ✓ Couples & Friends can apply together
- ✓ Start dates all year round

ON-SITE STAFF HOUSING



STAFF MEALS



£11 PER HOUR + TIPS



Perk



**50% off hostel accommodation when travelling!**



## CITY ROOMS



### Zone 1 Central London

- ✓ Week by week rentals
- ✓ Unlimited rental renewal
- ✓ Bedding provided
- ✓ Onsite coin operated laundry
- Rent includes:
  - ✓ 2 meals a day, 7 days a week
  - ✓ Free use of onsite gym
  - ✓ Contents insurance
  - ✓ Cleaner
- ✓ Best for singles or friends (not good for couples)

## ALFRED HITCHCOCK



### Alfred Hitchcock Hotel – Leytonstone, East London

- ✓ Budget Backpacker style rooms
- ✓ Tea & coffee making facilities
- ✓ Bedding / towels provided.
- ✓ No kitchen/laundry facilities
- ✓ Single or doubles with ensuite
- ✓ Rent week by week
- ✓ Best for singles or couples (not good for friends)
- ✓ Great place to stay while looking for a share house
- ✓ £150/wk for single ensuite room
- ✓ £180/wk for a double ensuite room for couples

## SHARED HOUSING



### Communal Housing – East & South West London

- ✓ 14 Flats in Fulham
- ✓ 18 Large houses in East London
- ✓ New properties always opening
- ✓ Single & Double rooms only
- ✓ Best for singles or couples
- ✓ Weekly rent inc bills + free wifi.
- ✓ All properties fully furnished
- ✓ Rent £150-180/week for solo travellers and £180-220/week for couples depending on room size and location



## CITY ROOM RATES

**Twin Room:**  
weeks 1-4 £166.28  
weeks 5-12 £157.04  
**£138.56 after week 12**

**3 Bed Dorm:**  
weeks 1-4 £142.20,  
weeks 5-12 £134.30,  
**£118.50 after week 12**

## IMPORTANT NOTE

Share housing is in high demand in London. On average there are 30 people on a waiting list. Once you book in to the Jumpstart London Program, you will go on a waiting list to give yourself a better chance of getting into a property. You will start the program in City rooms or the Alfred Hitchcock Hotel. This way you can view your own accommodation or one of our communal houses until you find the right property. City rooms and the Alfred Hitchcock are week to week (no long term commitment required).





## OPTION 3

# ADVENTURE CAMPS UK

Adventure resort jobs are like nothing you've ever experienced before. Working as the activity guide, or even behind the scenes as a support staff you'll create memories to last a lifetime.

Days at our resorts are packed with lots of adventure activities, and you will experience a real sense of "escaping the boredom" of your 9-5 life. With 250 staff members at the resort, you are guaranteed to have the best working holiday jobs coupled with fun.

If you love nothing more than being active, meeting new people, inspiring others, and spending time in the great outdoors then apply today! **No experience necessary. Just left school? This is the perfect option for you.**

## INCLUSIONS

- ✓ Job offer pre-departure
- ✓ Three meals per day
- ✓ Onsite staff accommodation
- ✓ 13 UK locations
- ✓ Training for adventure guides
- ✓ Housekeeping & Catering £10/hr
- ✓ Staff social events
- ✓ Feb-Nov, min 4 mth commitment
- ✓ **Job roles include:** Activity Instructor/ Group Leader, Catering assistant, Housekeeping assistant & Retail assistant
- ✓ **2 day Stoke Festival pass!**

ON-SITE STAFF HOUSING



STAFF MEALS



OUTDOOR ACTIVITY JOBS



Perk



**2 day Stoke festival pass on job completion!**





## OPTION 3

# ADVENTURE CAMP LOCATIONS UK



### BAWDSEY MANOR

Bawdsey Manor in Suffolk is a centre like no other. Right on the beach with 144 acres to explore.



### BEAM HOUSE

Beam House is our hideaway set in North Devon and home of our specialist surfing holidays.



### BOREATTON PARK

Based in Shropshire with the biggest range of activities and almost everything is on site.



### DALGUISE

Between Dunkeld and Pitlochry at the heart of Perthshire's 'Big Tree Country' - explore the rugged Scottish highlands.



### FORD CASTLE

In the heart of Northumberland countryside close to the border between England and Scotland, Ford Castle is steeped in history.



### LIDDINGTON

In a superb rural location, whilst still only a few mins from junction 15 in Wiltshire, Liddington is easy to get to and offers over 20 activities.



### LITTLE CANADA

Great waterside location on the Isle of Wight - perfect for an island adventure.



### MARCHANTS HILL

One of our most popular centres, close to London in Surrey with over 20 activities on site.



### NEWBY WISKE HALL

Set in beautiful private grounds in rolling countryside between the Yorkshire Dales and the North Yorkshire Moors.



### OSMINGTON BAY

Situated right by the sea at the heart of Dorset's World Heritage 'Jurassic Coast' just outside Weymouth. With access out onto a beautiful pebble beach.



### TREGOYD HOUSE

In a stunning rural location on the edge of the Black Mountains in the Brecon Beacons National Park, Wales. Home to our Horse Riding Pro trekking holiday.



### WINDMILL HILL

Near Hailsham, East Sussex, only two hours from Central London 45 minutes from Brighton and one hour from the Channel Tunnel.



### WINMARLEIGH HALL

Winmarleigh Hall in Lancashire is conveniently located near Preston, an hour from Manchester and Liverpool and three hours from Glasgow.





## OPTION 4

# LIVE & WORK HOTELS UK

The Live & Work Hotel option includes a job and on-site staff housing within one of our 21 hotels with historic significance.

**An authentic UK working holiday experience.**

To qualify for this option:

- You must have sufficient hotel or up-market restaurant service experience
- Must commit to 6 months plus
- Comply to a strict grooming policy
- Be willing to work where there is a vacancy available

**Top tip:** Anyone who has completed 6 months on the Jumpstart London programme, in the 5 star events team will automatically qualify for this option.

## INCLUSIONS

- ✓ Zoom interviews & job guarantee
- ✓ Pay rates start at £13/hour + tips
- ✓ Share of the Hotel service charges
- ✓ Onsite Staff Accommodation
- ✓ Rent: £48-£87/week depending on location
- ✓ Own room & 3 meals a day are provided

### Mainland Hotels:

- ✓ All year round, limited availabilities
- ✓ 6 months plus commitment

### Channel Islands:

- ✓ Commit for the full season May-Sep
- ✓ £500 bonus for completing the season

SINGLE ROOM WITH ENSUITE



3 STAFF MEALS A DAY



USE OF HOTEL FACILITIES



Perk



Visit sister hotels with staff discount – £30 a night!





## OPTION 4

# LIVE & WORK HOTELS UK OPTIONS

HIGH  
DEMAND



## CHANNEL ISLANDS

L'HORIZON BEACH HOTEL & SPA  
ST BRELADE'S BAY, JERSEY

**Staff Housing:** Yes

**Job Types:** Housekeeping,  
Bar staff, Food Service, Retail

HIGH  
DEMAND



## CHANNEL ISLANDS

GRAND JERSEY HOTEL & SPA  
ST HELIER, JERSEY

**Staff Housing:** Yes

**Job Types:** Housekeeping,  
Bar staff, Food Service, Retail

HIGH  
DEMAND



## CHANNEL ISLANDS

ST PIERRE PARK HOTEL, SPA &  
GOLF RESORT, GUERNSEY

**Staff Housing:** Yes

**Job Types:** Housekeeping,  
Bar staff, Food Service, Retail

HIGH  
DEMAND



## CHANNEL ISLANDS

FERMAIN VALLEY HOTEL  
ST PETER PORT, GUERNSEY

**Staff Housing:** Yes

**Job Types:** Housekeeping,  
Bar staff, Food Service, Retail

HIGH  
DEMAND



## CHANNEL ISLANDS

BRAYE BEACH HOTEL  
ALDERNEY

**Staff Housing:** Yes

**Job Types:** Housekeeping,  
Bar staff, Food Service, Retail

HIGH  
DEMAND



## MIDLANDS

ETTINGTON PARK HOTEL  
WARWICKSHIRE

**Staff Housing:** Yes

**Job Types:** Housekeeping,  
Bar staff, Food Service, Retail



## SOUTH EAST

NUTFIELD PRIORY HOTEL & SPA  
REDHILL, SURREY



## SOUTH EAST

BUXTED PARK, THE ASHDOWN  
FOREST, EAST SUSSEX



## MIDLANDS

FAWSLEY HALL HOTEL & SPA  
NORTHAMPTONSHIRE

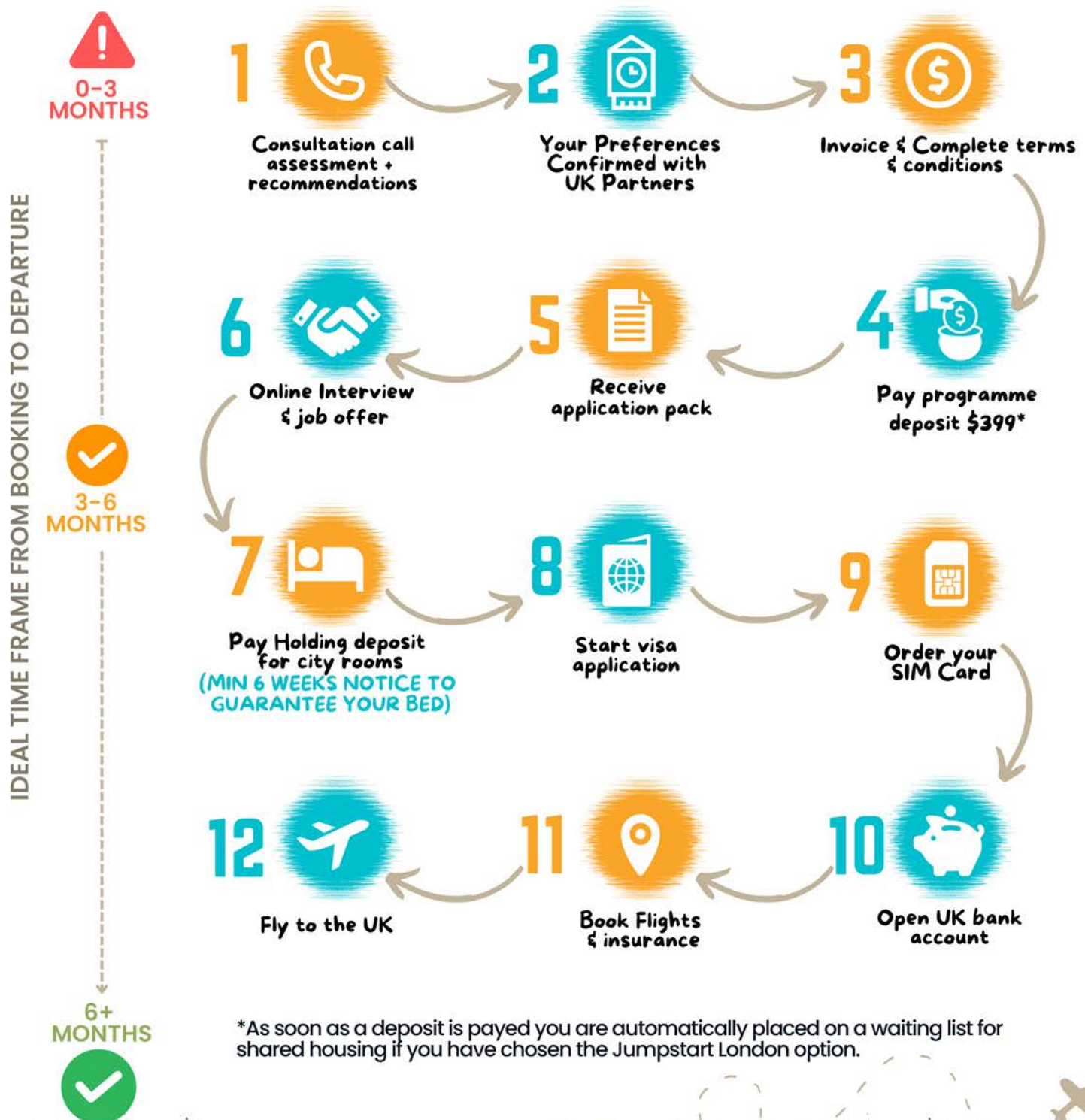
To apply go to



[www.theworkingholidayclub.com](http://www.theworkingholidayclub.com)



# UK PRE-DEPARTURE PROCESS



To apply go to



[www.theworkingholidayclub.com](http://www.theworkingholidayclub.com)



# THE UK ARRIVAL PROCESS



To apply go to



[www.theworkingholidayclub.com](http://www.theworkingholidayclub.com)



# UK YOUTH MOBILITY VISA PROCESS

1



Our licensed visa agents will call you and take you through the steps of your application

2



Fill out the online questionnaire

3



Gather & Upload supporting documents onto our system

6



Time to pay the Immigration Healthcare Surcharge and the Visa Application Fee to the British High Commission.

5



We will book your biometric appointment with you. You must by law submit a copy of your fingerprints.

4



We help coordinate your visa start date around when you want to travel + arrival dates. We review your dates so your visa aligns with them.

7



Your passport will be sent away for processing along with your visa application. Do not travel during this time period.

8



You will receive your passport back within 4-6 weeks with your visa application approved!

9



Once you arrive in the UK you will need to pick up your Biometric Residence Permit (BRP card)



To apply go to



[www.theworkingholidayclub.com](http://www.theworkingholidayclub.com)



# PLANNING TOOLS FOR WORK IN UK

## RELEVANT SKILLS FOR OUR PROGRAMS

JUMPSTART LONDON



LOW

BEDS & BARS



MODERATE

ADVENTURE CAMPS



LOW SKILLS

LIVE-IN HOTELS



HIGH SKILLS

Most of our positions require a low - moderate skill set with training provided. To be part of our Live-In Hotel programme, a higher skill set /experience is required to receive a job offer.

To apply go to

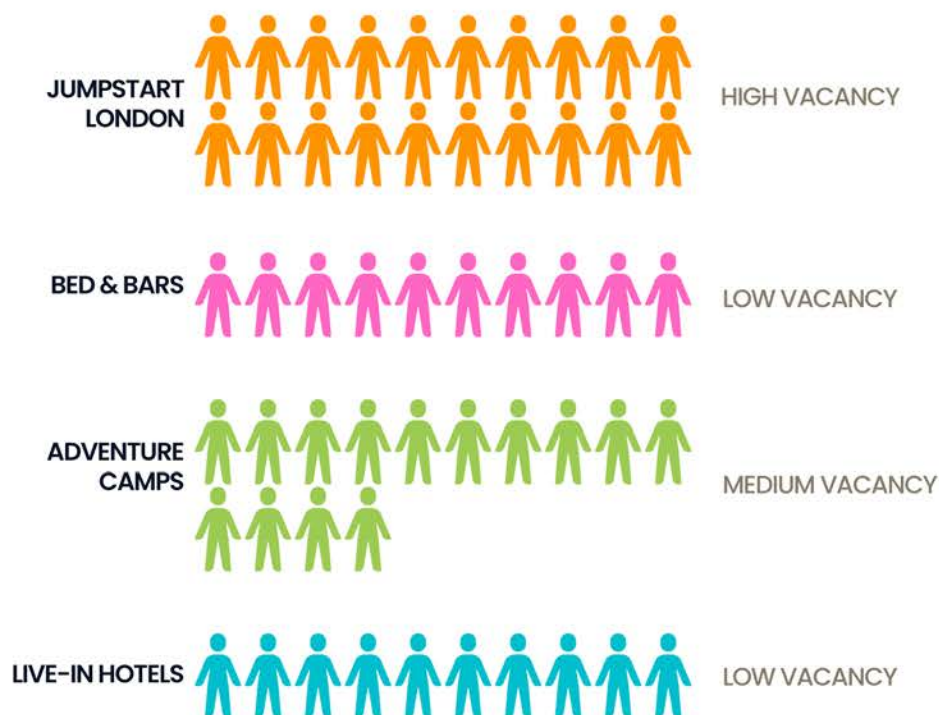


[www.theworkingholidayclub.com](http://www.theworkingholidayclub.com)



# PLANNING TOOLS FOR WORK IN UK

## ANNUAL ALLOCATIONS FOR VACANCIES



Our Jumpstart Programme offers the highest amount of positions vacant at any one time, Live-In Hotels has the least vacancies due to the seasonal aspect of the job.

To apply go to

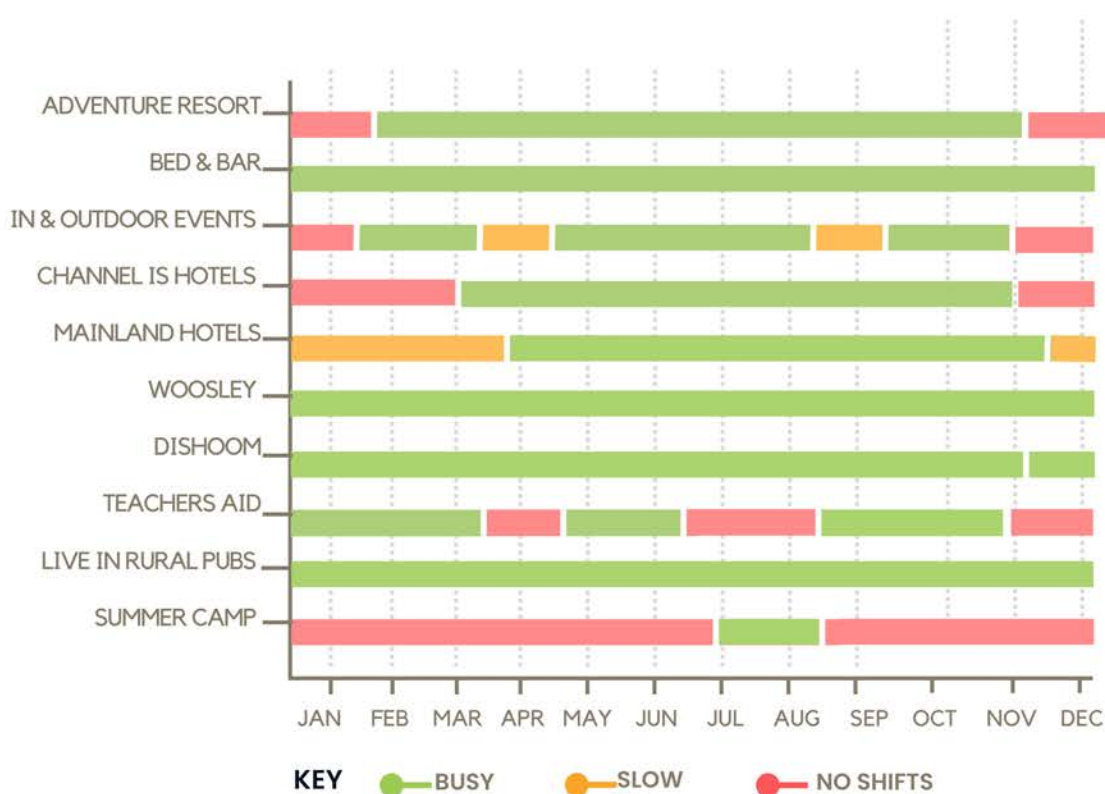


[www.theworkingholidayclub.com](http://www.theworkingholidayclub.com)



# PLANNING TOOLS FOR WORK IN UK

## BEST TIME OF YEAR FOR OUR JOB ROLES



Some of our roles are busy 12 months of the year like our London Bar and restaurant jobs. Other roles are seasonal ie: summer camps and availability is for a small period of time.

To apply go to



[www.theworkingholidayclub.com](http://www.theworkingholidayclub.com)



# PLANNING TOOLS FOR WORK IN UK

## JOB FLEXIBILITY IN OUR PROGRAMMES

JUMPSTART LONDON



VERY FLEXIBLE

BEDS & BARS



MODERATE

ADVENTURE CAMPS



LOW FLEXIBILITY

LIVE-IN HOTELS



LOW FLEXIBILITY

Our Jumpstart London Programme offers the highest flexibility as you can start any time of the year may book shifts from week to week with no long term commitment. Live-In Hotels for example have low flexibility as they require a 4 month minimum commitment.

To apply go to



[www.theworkingholidayclub.com](http://www.theworkingholidayclub.com)



# UK JOB LOCATIONS



To apply go to



[www.theworkingholidayclub.com](http://www.theworkingholidayclub.com)





# WHAT ARE THE COSTS INVOLVED?

## PRE-DEPARTURE

- ✓ UK Live Work Play Programme **\$1399 AUS**  
(or \$200 off if you complete the visa application yourself, not recommended)
- ✓ Immigration Healthcare Surcharge (IHS) **£940 GBP**
- ✓ Visa Application Fee **£244 GBP**
- ✓ Savings of at least **\$5000 AUS**
- ✓ London Only - Room holding deposit - **£200 GBP**

## ARRIVAL

- ✓ 1 weeks rent approx **£140 GBP - £225 GBP**  
(Depends on room selection)
- ✓ Uniforms (London only) **£200 GBP**
- ✓ Living expenses (Meals, Travel, Phone Plan, Entertainment etc.)

We estimate that you will need approximately \$10,000 saved to travel and work in the UK. The cheapest way to start is by choosing our Live-In options such as Adventure Camps or Bed & Bars. However our Jumpstart London option pays the most and is most flexible for regular travel. Once you have returned from travel our Live-In jobs are a great option to save money without the rent costs involved.

To apply go to



[www.theworkingholidayclub.com](http://www.theworkingholidayclub.com)



# HOW TO USE OUR UK PROGRAMME

An example itinerary of how you can Live, work & travel over a 2 year period!





# The Working Holiday Club™

WORK TRAVEL VOLUNTEER



## OUR SUPPLIERS:

**contiki**  
TRAVEL. TOGETHER.

**THE STAKE TRAVEL Co.**

**KILROY**  
travels

**FLIGHT CENTRE**  
TRAVEL GROUP™



**JYSK REJSEBUREAU**  
MÆRK VERDEN

**Belushi's**  
FOOD | DRINK | SPORTS | MUSIC

**DISHOOM**  
BOMBAY CAFE  
दिल्ली

**WHISTLER BLACKCOMB**

**Mike Wiegele**  
Helicopter Skiing

**Fairmont**  
HOTELS & RESORTS

**PURSUIT**™

**SUN PEAKS**

**brewster**  
travel canada

**HandPICKED**  
HOTELS

**artotel**

**WESTIN**  
HOTELS & RESORTS

**PGL**

**SilverStar**  
mountain resort

**GROUSE MOUNTAIN**  
THE PEAK OF VANCOUVER

**Hotel Savoy**\*\*\*\*

**LAST FRONTIER**  
HELISKIING

**NAKISKA**  
Calgary's Closest Mountain

**PAN PACIFIC**  
WHISTLER

**Samesun**

**REVELSTOKE**  
MOUNTAIN RESORT

**HOIMES**

**one hundred shoreditch**

**SASQUATCH**  
Mountain Resorts

**PARK PLAZA**

**Big White**  
SKI RESORT  
IT'S THE SNOW

**cypress**  
mountain.com

**SHANGRI-LA**  
HOTELS and RESORTS

**ZÉDEL**  
BRASSERIE

**WESTIN**  
HOTELS & RESORTS

**XOX CAMPS**

**THE HITCHCOCK HOTEL** 1890

**CLARIDGE'S**

**LhaLondon**

**Lake Louise**  
SKI RESORT

**NORQUAY**  
BANFF • ALBERTA



[www.theworkingholidayclub.com](http://www.theworkingholidayclub.com)



1300 295 579