

# The Working Holiday Club™

WORK TRAVEL VOLUNTEER

2022/23





# CANADA POWDER

**\$1199**  
AUS

**\$799**  
NZ

**O**ur Winter working holiday programme is your one-stop service to the most authentic Canadian working holiday experience. Whether you stay for the one season or end up staying for the full two years TWHC has you covered! Our Canadian working holiday packages will breeze you through your confusing visa application process, job interview as well as hints and tips, not to mention all of your departure and arrival processes to name a few.

## WHAT DO I GET?

- ✓ Ski Resort Work Placement
- ✓ Staff Housing / Housing Assistance
- ✓ Step-By-Step Visa Assistance
- ✓ Free Season Lift Pass
- ✓ Free Summer Placement
- ✓ Hostel Orientation on Arrival to Vancouver
- ✓ 24/7 Support from our local team
- ✓ Bank Account Assistance
- ✓ Free SIM Card (No Contract)
- ✓ Personal Application Coordinator
- ✓ Money-Back Guarantee
- ✓ Discounts on Ski/Snowboarding Lessons
- ✓ Staff Discounts on Retail + Rental gear
- ✓ Canadian Arrival Guide
- ✓ Vancouver City Sightseeing Tour
- ✓ SIN Setup Help
- ✓ End Of Season Tax Back Help
- ✓ Access to closed Facebook Groups – Exclusive for TWHC working holiday staff







**H**iking, White Water Rafting, Downhill Biking and Rock Climbing are just a few of the awesome activities you can experience while working a summer season in Canada. With Pre-Arranged jobs everywhere from Whistler to Banff we have got you're covered with all positions coming with full-time hours, staff housing, a free season Lift/Bike pass and full training on arrival.



## WHAT DO I GET?

- ✓ Pre Arranged Employment at a Resort or Hotel of your Choice!
- ✓ Free Season Lift Pass
- ✓ Money Back Guarantee
- ✓ Staff Housing OR Housing Assistance
- ✓ Step-by-Step Visa Assistance
- ✓ Vancouver Sightseeing Tour
- ✓ Orientation On Arrival
- ✓ Access to Closed TWHC Staff Facebook Groups
- ✓ Staff Social Events
- ✓ Canada Arrival Guide
- ✓ 24 Hour Emergency Line
- ✓ Free Volunteering Worldwide
- ✓ In Country TWHC Staff assistance

## CANADA QUALIFICATION CRITERIA

### IMPORTANT INFO

- ▶ Visa Application completed online
- ▶ Must need Police Report issued within 6 months
- ▶ Don't have to send passport away
- ▶ Can apply anywhere in the world
- ▶ Must submit biometrics info at a Canadian visa office

### ELIGIBILITY

- ▶ Must be 19-35
- ▶ Must hold Aus, NZ, UK or EU passport
- ▶ No DUI's or Criminal Convictions
- ▶ Proof of Funds \$3000 AUD
- ▶ Must have travel insurance

### VISA COST

- ▶ \$335 CAD

### BEST TIME TO APPLY

- ▶ Winter: November - June (Number Dependant)
- ▶ Summer: August - April (Number Dependant)



# OUR CANADIAN EMPLOYERS



## WHISTLER BLACKCOMB

The largest ski resort in Nth America and is consistently rated in the top 3 resorts in the world. Huge terrain, constant snowfall and great nightlife!

**Season:** Late Nov- April

**Province:** British Columbia

**Accommodation:** yes

**Min age:** 19

**Jobs:** lift operations, tube park, various food, & beverage, retail, rentals, Finance, ski school sales, guest services, tickets

**Eligible Nations:** Australia, NZ

**Interview locations:** Aus, NZ



## SUN PREAKS RESORT

4,270 acres are spread across three skiable peaks, each with its unique personality.

**Season:** Oct/ Nov - April

**Province:** British Columbia

**Accommodation:** for resort and hotel employees.

**Min age:** 19

**Jobs:** With over 700 employees in the Winter across the resort and hotel, there are many opportunities across all our departments.

**Eligible Nations:** Australia & NZ

**Interview locations:** Australia



## SILVER STAR

Silver Star Mountain Resort has small-town charm and is a welcoming place for international seasonal workers.

**Season:** late Nov- April

**Province:** British Columbia

**Accommodation:** yes

**Min age:** 21

**Jobs:** outdoor roles, F&B, rental, retail, ltd finance, ski school sales, support roles

**Eligible Nations:** Australia, NZ, Ireland, Germany, France, Netherlands, Denmark, Sweden, Belgium, Norway

**Interview locations:** Aus, NZ



## CYPRESS MOUNTAIN

Only 20 mins from downtown Vancouver - you get the best of both worlds. Work a ski season while having all the luxuries of big city life at your doorstep.

**Season:** Dec 5th - Early April

**Province:** British Columbia

**Accommodation:** No

**Min age:** 19

**Jobs:** cooks, dishwasher, floor supervisors, bartender, server, cashier, busser, barista, ski & snow-board tech, rental cashier, repair tech, lift attendant, snow school attendant and more

**Eligible Nations:** Australia & NZ

**Interview locations:** Australia



## MT NORQUAY BANFF

If airtime is your fix, or you're a rising star of the slopes, look no further than Norquay's mixed Terrain Park.

**Season:** Late Nov-April

**Province:** British Columbia

**Accommodation:** yes

**Min age:** 19

**Jobs:** lift operations, tube park, various food & beverage, rentals, retail, finance, ski school sales, guest services, tickets

**Eligible Nations:** Australia, New Zealand

**Interview locations:** Australia, New Zealand



## KICKING HORSE RESORT

Kicking Horse has advanced terrain, Backcountry powder skiing, big open bowls and double blacks

**Season:** Late Nov-April

**Province:** British Columbia

**Accommodation:** yes

**Min age:** 19

**Jobs:** lift operations, tube park, various food & beverage, rentals, retail, finance, ski school sales, guest services, tickets

**Eligible Nations:** Australia, NZ

**Interview locations:** Aus, NZ



## GROUSE MOUNTAIN

Grouse Mountain offers a challenging and enjoyable work environment with a world of career opportunity. Vancouver's favourite Mountain 15 mins from the city, unbelievable night skiing.

**Season:** Late Nov-April

**Province:** British Columbia

**Accommodation:** No

**Min Age:** 19

**Jobs:** lift operator, ice rink attendants, sleigh drivers, rental technicians, call centre operators, baristas, guest services and cooks

**Eligible Nations:** Australia, NZ

**Interview locations:** Aus, NZ



## SUNSHINE VILLAGE

Sunshine Village is one of 3 resorts in the locality of Banff. The Banff region attracts thousands of tourists, making it one of the best places to work a season for those who like to be amongst the action.

**Season:** Early Nov- late May

**Province:** Alberta

**Accommodation:** Most jobs come with staff housing

**Min Age:** 19

**Jobs:** lift operations, food & beverage, support roles, guest services

**Eligible Nations:** Australia, NZ

**Interview Locations:** Australia



# OUR CANADIAN EMPLOYERS



## BIG WHITE RESORT

Big White is a comfortable, friendly resort, popular with Australians. Home to a ton of groomed, intermediate terrain.

**Season:** Late Nov - April

**Province:** British Columbia

**Accommodation:** yes

**Min age:** 19

**Jobs:** lift operations, tube park, various food & beverage, rentals, retail, finance, ski school sales, guest services, tickets

**Eligible Nations:** Australia, NZ

**Interview locations:** Aus, NZ



## LAKE LOUISE

Lake Louise is consistently acclaimed the most scenic ski area on the planet and legendary for light, dry, champagne powder, impossibly bright blue skies and an astounding 4,200 acres.

**Season:** Late Nov - April

**Province:** Alberta

**Accommodation:** Yes - staff housing provided.

**Min Age:** 19

**Jobs:** snowmaking, lift ops, retail, rental, guest services, snowmaking, food & bev

**Interview locations:** Australia



## WESTIN RESORT

The year-round beauty of Whistler and Blackcomb Mountains is the background for our warm and welcoming resort, found in the stylish pedestrian village of Whistler.

**Season:** Late Nov - April

**Province:** British Columbia

**Accommodation:** yes

**Min age:** 19

**Jobs:** limited to front desk and housekeeping

**Eligible Nations:** Australia, New Zealand

**Interview locations:** Australia, New Zealand



## REVELSTOKE MT RESORT

At its core, Revelstoke has three defining pillars that keep loyal snow seekers coming back year after year big mountain terrain, legendary powder and small-town vibes.

**Season:** Late Nov - Mid April

**Province:** British Columbia

**Accommodation:** No

**Min age:** 19

**Jobs:** Line cooks, Servers, Retail, Cashiers, Lift Operations, Guest Services, Rentals, Ski School, Custodial, Housekeeping, Various hotel Positions.

**Eligible Nations:** Australia & NZ

**Interview locations:** Skype



## LAST FRONTIER HELI SKIING

Situated in Northern British Columbia, 360km North of Terrace, Last Frontier Heliskiing operates the largest single heliski area in the world.

**Season:** Mid-December through Mid-April

**Province:** British Columbia

**Accommodation:** Yes

**Min age:** 22

**Jobs:** admin assistant, transfer co-ordinators, ski tech, servers, front desk staff, café attendant, head chef, sous chef, line chef, kitchen support, bartenders

**Eligible Nations:** Global

**Interview locations:** Online & Vernon, BC



## NAKISKA RESORT

Due to Nakiska's close proximity of only 45 mins to Calgary they are known as 'Calgary's learning mountain'. Built specifically for the 1988 Winter Olympic Games, long runs and meticulous grooming.

**Season:** November to April

**Province:** Alberta

**Accommodation:** Staff accommodation provided

**Min Age:** 20

**Jobs:** snow making, lift operations, retail, rental, guest services, food & beverage

**Eligible Nations:** Australia, NZ

**Interview locations:** Australia



## PERSUIT BANFF

Brewster own and operate 5 of the biggest attractions in the Rocky Mountains; the Banff Gondola, Banff Lake Cruise, Maligne Lake Cruise, Glacier Adventure and the all-new Glacier Skywalk.

**Season:** April - October

**Province:** Alberta

**Accommodation:** Most jobs

**Min age:** 19

**Jobs:** retail, various food & beverage roles, ticket agents, drivers, bell person, front desk agent, cleaner, dockhand, photo expert, lift attendants.

**Eligible Nations:** Aus, NZ

**Interview locations:** Australia



## MIKE WIEGELE HELI SKIING

We ski over 1.5 million acres of some of the most picturesque and breathtaking mountain terrain in the world, and we want to share it. A day of heli-skiing is only as good as your guide. Ours know no boundaries

**Season:** Early Nov - late May

**Province:** Alberta

**Accommodation:** Most jobs come with staff housing

**Min Age:** 19

**Jobs:** lift operations, food & beverage, support roles, guest services

**Eligible Nations:** Australia, NZ

**Interview Locations:** Australia



# LIVE & WORK IN UK - OPTIONS 1 + 2 + 3 = 1 PRICE \$695

OPTION  
1

## JUMPSTART LONDON

**O**ur Jumpstart London program provides everything you need to get started in London. We can help with your UK working holiday visa application, arrange a pre-departure job and can help you lock in travel flexible accommodation too.

### WHAT DO I GET?

- ✓ Job pre-departure
- ✓ Long term lease in share house
- ✓ Short notice periods
- ✓ National Insurance number
- ✓ UK bank account
- ✓ Jack the Ripper Tour
- ✓ Street Art & Graffiti Tour
- ✓ London Landmarks Tour
- ✓ Soho Walking Tour
- ✓ James Bond & History Tour
- ✓ Ongoing support in the UK
- ✓ Available to use 24 months
- ✓ Closed facebook groups
- ✓ Discounted hostel stays
- ✓ Employment training
- ✓ Staff social events
- ✓ Harry Potter Tour
- ✓ Ghost Tour
- ✓ Sherlock Holmes Tour

### JUMPSTART LONDON JOBS



#### JUICE BAR WORKER

**Position:** Front of House & Back of House roles available  
**Job Type:** Fixed-term contract  
**Position:** Front of House & Back of House roles available  
**Salary:** From £9.50/hr + holiday pay  
**Location:** Central London - 45 bars  
**Experience:** Entry level  
**Training:** Provided



#### OUTDOOR EVENT CREW

**Position:** Labourer  
**Location:** Job Type: Flexible  
**Wages:** £12.34/hr to £16.00/hr  
**Location:** Central London  
**Experience:** Entry level  
**Training:** Provided  
Major festivals, concerts, sporting events or on Hollywood movie sets all UK venues – mostly London



#### INDOOR HOSPITALITY & EVENTS

**Position:** Events & Food  
**Job Type:** Flexible  
**Job Offer:** Pre-departure  
**Wages:** £10-14/hour + holiday pay  
**Employers:** Central London Hotels  
**Experience:** Entry Level  
**Training:** Provided  
Work as many hours as you want and be paid hourly. Early shifts, Late shifts, or even Doubles



# JUMPSTART LONDON JOBS

## 5 STAR HOTEL JOBS

**Want to work in a 5\* hotel in Central London? Full time roles within:**

Art'otel, Park Plaza, Holmes Hotel

**Job roles:** Reception, concierge, kitchen, guest relations, food & beverage, hosts, room service, housekeeping & more!

- ✓ Pre-departure Interview
- ✓ 3 month commitment
- ✓ Guaranteed full time hours
- ✓ Onsite Staff housing
- ✓ No previous experience required
- ✓ Starting wage from £10 an hour
- ✓ 40 hours a week



### WORK AS A LABOURER

**Position:** General Labourer  
**Job Type:** Flexible  
**Pay:** £10/hour (£80 per day)  
**Location:** Central London  
**Experience:** Entry level  
**Training:** Provided  
**Start time:** 8am – about 4pm  
Plus overtime available + tips



### WORK IN GRUNGY RESTAURANT

**Runner:** from £10.32–£10.33/hour  
**Barback:** from £10.82– £10.83/hour  
**Host:** from £11.33– £11.95/hour  
**Bartenders:** from £12.23– £12.63/hour  
**Server:** from £13.44– £14.55/hour  
**Shift lengths:** average 8 hours per shift, guaranteed 40 hours/week min

## UK WORK VISA GUARANTEE



**\$299**

### To qualify for the UK Tier 5 Youth Mobility Scheme visa:

- ▶ Be aged between 18 and 30 years
- ▶ Hold a passport from an eligible, partnered country (Australia, Canada, Japan, Monaco, New Zealand, Hong Kong, Republic of Korea or Taiwan)
- ▶ Have access to the equivalent of £2530GBP (i.e. in your bank account for at least 28 days)
- ▶ Have no dependants (children or other) under the age of 18
- ▶ Not previously taken part in the Youth Mobility Scheme or travelled on a UK Working Holiday Visa
- ▶ Have not had any criminal convictions in the last 12 months

### WHAT DO I GET?

- ✓ UK work visa guarantee
- ✓ Money back guarantee
- ✓ National Insurance Number
- ✓ Office job interviews
- ✓ UK bank account
- ✓ UK tax return assistance
- ✓ Healthcare & teaching jobs
- ✓ In country support
- ✓ Fee free currency transfer
- ✓ IT & Accounts jobs



# JUMPSTART LONDON LONG TERM ACCOMMODATION

## SHARED HOUSING ZONES 2 & 3

A minimum of 3 months notice period to secure a shared house.



### WHAT DO I GET?

- ✓ Option of staying in a single, twin share, or double room within a shared house.
- ✓ Zones 2-3 of East and South-West London
- ✓ 25-35 minutes commute into central London
- ✓ Prices of the rooms vary depending on factors like room size and location
- ✓ Single occupancy start at £130 a week
- ✓ Twin-share rooms for friends travelling together start at £180/week (£90/week each) limited
- ✓ Double rooms start at £180/week (£90/week each)
- ✓ Weekly rent includes all bills and free wifi.

### Important information

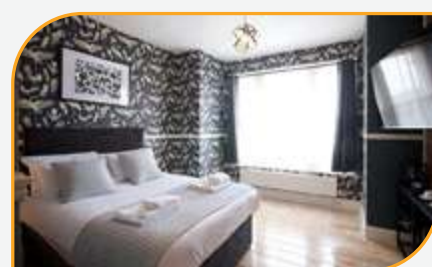
Covid has changed the landscape for working holiday makers looking for cheap shared rooms. Travellers should expect to pay £700 a month and upwards for a single occupancy room in a house share with 3-4 rooms per house. 1 month deposit, 1 month rent and a 6 month lease is the new normal.

We recommend on arrival that you pre-book 2 weeks in flexible city rooms and view weekly availabilities from us until your perfect share house is free.

## JUMPSTART LONDON FLEXIBLE ACCOMMODATION

### BOUTIQUE HOTEL ACCOMMODATION

Hotel is booked for individuals on a waiting list for shared houses or city rooms.



- ✓ Fully refurbished rooms
- ✓ Tea & coffee making facilities,
- ✓ Bedding and towels are provided.
- ✓ No kitchen/laundry facilities
- ✓ Food discounts for hotel restaurant.

#### OLD STYLE ROOMS:

- ▶ Single £140/week
- ▶ Twin-share £160/week
- ▶ Double room £160/week

#### NEW STYLE ROOMS:

- ▶ Single £150/week
- ▶ Small double £170/week
- ▶ Large double £200/week

\*Subject to availability and particular room type is not guaranteed. In the event where you have not been able to provide the necessary notice period, or waiting for your preferred room configuration, weekly rental options in east London are available to you. General public rates are charged at £95 per night, however your rates are as listed above.



# ROOMS IN LONDON CITY ZONES 1 & 2

## JUMPSTART LONDON FLEXIBLE CITY ROOMS

- ✓ Book 1 month prior for room guarantee
- ✓ 2 meals a day, 7 days a week included
- ✓ £200 security deposit
- ✓ Volunteer for 20 hours a week for rent (optional)
- ✓ Gym – free
- ✓ 1 month notice for a guaranteed spot
- ✓ Contents insurance included for belongings
- ✓ 7 days notice to move out



### BELVEDERE HOUSE

**Location:** Gloucester Road  
A classic self-catered hostel. Within easy access of London transport and is within Zone 1 of the underground tube.  
**Room types:** Single, shared  
**Cost:** from £117.50 per week



### BOWDEN COURT

**Location:** Notting Hill  
At the centre of Notting Hill, with a fantastic range of facilities. Close to Hyde Park, and Notting Hill Gate tube station (Zone 1).  
**Room types:** Single, shared  
**Cost:** from £105.00 per week



### BELSIZE HOUSE

**Location:** Belsize Park  
Belsize House is located near the famous Hampstead Heath and Belsize Park Villages, and boasts beautiful London living.  
**Room types:** Single, shared  
**Cost:** from £102.00 per week



### HALPIN HOUSE

**Location:** South Kensington  
This beautiful Grade II listed accommodation in London has magnificent high ceilings & state-of-the-art onsite gym.  
**Room types:** Single, shared  
**Cost:** from £117.50 per week



### DAVIES COURT

**Location:** Canary Wharf  
Has an on-site gym – included in room price. Canary Wharf is packed with the hottest shops, cafés, bars and restaurants.  
**Room:** Single, share, Twin En-suites  
**Cost:** from £137.50 per week



### HOLLAND HOUSE

**Location:** Victoria  
Overlooks the Eccleston Square Gardens, this hostel offers an onsite gym, common area. Buckingham Palace, Westminster Abbey are closeby.  
**Room types:** Single, shared  
**Cost:** from £105.00 per week



### FRIENDSHIP HOUSE

**Location:** Southwark  
An architectural-award-winning building that houses fantastic en-suite, self-catered accommodation in London.  
**Room types:** Single, shared  
**Cost:** from £147.50 per week



### NEW MANSION HOUSE

**Location:** Lancaster Gate  
Accommodation surrounded in peace and quiet in this busy city. Situated in a stunning and historic building overlooking Kensington Gardens.  
**Room types:** Single, shared  
**Cost:** from £137.00 per week



### LEINSTER HOUSE

**Location:** Bayswater  
Refurbished in 2018 this hostel boasts character and charm. Located amongst some of the hottest bars, cafés and shops in Bayswater!  
**Room types:** Single, shared  
**Cost:** from £112.50 per week



### RAILTON HOUSE

**Location:** Paddington  
Is sight-seeing on your agenda? Luckily for you, Railton House is surrounded by some of London's most beautiful landmarks.  
**Room types:** Single, shared  
**Cost:** from £105.00 per week



### NEWINGTON COURT

**Location:** Stoke Newington  
Super stylish and affordable accommodation! Offering en-suite rooms with choice of a shared kitchen, or your own.  
**Room types:** Studio, Twin Studio, Single En-suite  
**Cost:** from £159.75 per week



### SANDEMAN-ALLEN HOUSE

**Location:** Bayswater  
Our classic townhouse, is one of the best around and affordable for the young professional – located near Hyde Park, London.  
**Room types:** Single, Shared  
**Cost:** from £105.00 per week



# LIVE & WORK IN UK - OPTIONS 1 + 2 + 3 = 1 PRICE \$695

OPTION  
2

## ADVENTURE RESORT

The Working Holiday Club™ is offering you the opportunity to work and live at our exciting adventure resorts in positions such as an Activity Instructor, in Catering, Housekeeping or retail. Join other international backpackers and work & travel throughout the UK!

### WHAT DO I GET?

- ✓ Job pre-departure
- ✓ 24 UK locations
- ✓ Staff accommodation
- ✓ Meals provided
- ✓ Employment training
- ✓ Staff social events
- ✓ 24 months UK support
- ✓ UK Bank Account
- ✓ National Insurance Number
- ✓ UK SIM card
- ✓ Fee free currency transfer
- ✓ Free EU Festival Weekend



ADVENTURE INSTRUCTOR	ADVENTURE INSTRUCTOR	ADVENTURE INSTRUCTOR	CATERING ASSISTANTS HOUSEKEEPING ASSISTANTS RETAIL ROLES
18-20 YEARS OLD	21-22 YEARS OLD	23+ YEARS OLD	18+ YEARS OLD
£1,246.48	£1,675.35	£1,825.00	£1,825.00
Accommodation £243.59 per month (just £8.01 a night)			
Meals £195.33 per month (just £2.19 a meal)			
UK Government Tax and National Insurance*			
Pension (opt out of pension scheme to claim back contributions)			
£673.71	£943.90	£899.74	£1,038.16

### ELIGIBILITY

- ▶ Between 18-31 years of age
- ▶ Eligible to apply for and receive a UK work visa (or a British Passport)
- ▶ Enthusiastic & outgoing personality
- ▶ Fluent in English
- ▶ No Criminal Convictions
- ▶ Interest in working with kids



# ADVENTURE RESORT LOCATIONS



## TREGOYD HOUSE

**Location:** Brecon Beacons  
**Season:** March – October  
**Number of guests:** 98  
**Number of staff:** 35  
**Accommodation:** Shared rooms within the house or at our sister centre, Llwyn Filly



## WINMARLEIGH HALL

**Location:** Lancashire  
**Season:** February – November  
**Number of guests:** 280 (7-17 yr)  
**Number of staff:** 75  
**Accommodation:** Twin rooms within a purpose-built staff accommodation block.



## OSMINGTON BAY

**Location:** Dorset Coastline  
**Season:** March – November  
**Number of guests:** 810 (7-17 yrs)  
**Number of staff:** 200  
**Accommodation:** Comfortable, en-suite basic chalets shared between two people.



## CAYTHORPE COURTHALL

**Location:** Lincolnshire  
**Season:** February – November  
**Number of guests:** 800 (7-17 yr)  
**Number of staff:** 160  
**Accommodation:** Indoor, shared rooms for staff.



## WINDMILL HILL

**Location:** East Sussex  
**Season:** February – November  
**Number of guests:** 450 (7-17 yrs)  
**Number of staff:** 110  
**Accommodation:** Staff are accommodated in shared, en-suite rooms



## BEAM HOUSE

**Location:** North Devon  
**Season:** February – October  
**Number of guests:** 156 (7-17 yr)  
**Number of staff:** 35-45  
**Accommodation:** In shared rooms in the 17th C country house or staff housing blocks.



## HILLCREST

**Location:** Herefordshire  
**Season:** February – October  
**Number of guests:** 98 (7-13 yrs)  
**Number of staff:** 130  
**Accommodation:** Twin & triple rooms in a purpose built chalet, adjacent to the centre.



## DALGUISE

**Location:** Perthshire, Scotland  
**Season:** February – November  
**Number of guests:** 440 (7-16 yr)  
**Number of staff:** 100  
**Accommodation:** Shared rooms within the manor house or nearby staff block.



## LITTLE CANADA

**Location:** Isle of Wight  
**Season:** February – November  
**Number of guests:** 720 (7-18 yrs)  
**Number of staff:** 130  
**Accommodation:** En-suite cabins, mobile holiday homes or rooms in on-site house.



## BOREATTON PARK

**Location:** Shropshire  
**Season:** February – November  
**Number of guests:** 950 (8-17 yr)  
**Number of staff:** 250  
**Accommodation:** Shared log cabins, on-site houses with or tents in the Summer months.



## WHITECLIFF BAY

**Location:** Isle of Wight  
**Season:** April – Mid July  
**Number of guests:** 300 (8-18 yrs)  
**Number of staff:** 38  
**Accommodation:** Twin-shared chalets. Max of 4 share a chalet.



## BARTON HALL

**Location:** South Devon  
**Season:** April – September  
**Number of guests:** 720 (7-17 yr)  
**Number of staff:** 130  
**Accommodation:** On-site staff housing



## MARCHANTS HILL

**Location:** Surrey  
**Season:** February – November  
**Number of guests:** 500 (7-17 yr)  
**Number of staff:** 120  
**Accommodation:** Various – en-suite wooden cabins, all staff stay in shared accommodation



## LIDDINGTON

**Location:** Wiltshire  
**Season:** February – November  
**Number of guests:** 1000 (7-17 yr)  
**Number of staff:** 250  
**Accommodation:** Purpose-built, shared rooms, Some rooms have en suite.



# LIVE & WORK IN UK - OPTIONS 1 + 2 + 3 = 1 PRICE \$695

OPTION  
3

## UK LIVE & WORK HOTEL

**O**ur hand picked Hotels is a unique collection of award-winning country house and spa hotels located throughout the UK and the Channel Islands.

Our Live & Work Hotel pack offers work from behind the scenes to front of house, we offer flexible options; whether you're looking for a full-time role, part-time hours or even casual work, we have something for everyone.

### WHAT DO I GET?

- ✓ Job in UK Hotel/ Resort
- ✓ Live-In accommodation
- ✓ 3 Meals a day provided
- ✓ Use of all hotel facilities
- ✓ Rent £60 per week
- ✓ Guernsey Rent £80 p/w
- ✓ World wide volunteering
- ✓ Employment training
- ✓ Pay starts at £10 an hour
- ✓ 21 castles & manors
- ✓ front of house positions
- ✓ Back of house positions
- ✓ Reception roles
- ✓ Barista's & bar work
- ✓ All year round
- ✓ Single room occupancy



TOP  
LOCATION

#### CHANNEL ISLANDS

**Location:**  
Fermain Valley Hotel  
St Peter Port, Guernsey

**Staff Housing:** Yes

**Job Types:**

- Front of House
- Barista
- Housekeeping
- Bar staff
- Food Service
- Retail

**Season:** All Year Round



TOP  
LOCATION

#### CHANNEL ISLANDS

**Location:**  
L'Horizon Beach Hotel & Spa  
St Brelade's Bay, Jersey

**Staff Housing:** Yes

**Job Types:**

- Front of House
- Barista
- Housekeeping
- Bar staff
- Food Service
- Retail

**Season:** All Year Round



TOP  
LOCATION

#### CHANNEL ISLANDS

**Location:**  
Braye Beach Hotel  
Alderney

**Staff Housing:** Yes

**Job Types:**

- Front of House
- Barista
- Housekeeping
- Bar staff
- Food Service
- Retail

**Season:** All Year Round



# UK LIVE & WORK HOTEL LOCATIONS

## ABOUT UK HOTEL STAFF PERKS

- ✓ UK Staff Housing costs £60 per week
- ✓ Guernsey location is £80 per week.
- ✓ This cost includes 3 meals a day!
- ✓ All bills included
- ✓ Minimum 1 month stay per location with the opportunity to hotel hop on a road trip throughout the UK



### SOUTH EAST

**Location:**  
**Brandshatch Place Hotel & Spa, Fawkham, Kent**

**Staff Housing:** Yes

**Job Types:**

- Housekeeping
- Bar staff
- Food Service
- Retail

**Season:** All Year Round



TOP LOCATION

### CHANNEL ISLANDS

**Location:**  
**Grand Jersey Hotel & Spa St Helier, Jersey**

**Staff Housing:** Yes

**Job Types:**

- Housekeeping
- Bar staff
- Food Service
- Retail

**Season:** All Year Round



TOP LOCATION

### CHANNEL ISLANDS

**Location:**  
**St Pierre Park Hotel St Peter Port, Gue**

**Staff Housing:** Yes

**Job Types:**

- Front of House
- Bar staff
- Food Service
- Retail

**Season:** All Year Round



### SOUTH EAST

**Location:**  
**Buxted Park Hotel Ashdown Forest, East Sussex**

**Staff Housing:** Yes

**Job Types:**

- Housekeeping
- Bar staff
- Food Service
- Retail

**Season:** All Year Round



### SOUTH EAST

**Location:**  
**Chilston Park Hotel Lenham, Kent**

**Staff Housing:** Yes

**Job Types:**

- Housekeeping
- Bar staff
- Food Service
- Retail

**Season:** All Year Round



### SOUTH EAST

**Location:**  
**Nutfield Priory Hotel & Spa Redhill, Surrey**

**Staff Housing:** Yes

**Job Types:**

- Housekeeping
- Bar staff
- Food Service
- Retail

**Season:** All Year Round



### SOUTH EAST

**Location:**  
**Woodlands Park Hotel Cobham, Surrey**

**Staff Housing:** Yes

**Job Types:**

- Housekeeping
- Bar staff
- Food Service
- Retail

**Season:** All Year Round



### SOUTH WEST

**Location:**  
**Audleys Wood Hotel Basingstoke, Hampshire**

**Staff Housing:** Yes

**Job Types:**

- Housekeeping
- Bar staff
- Food Service
- Retail

**Season:** All Year Round



# UK LIVE & WORK HOTEL LOCATIONS



TOP  
LOCATION

## SOUTH WEST

**Location:**  
**Bailbrook House Hotel**  
**Bath**

**Staff Housing:** Yes

**Job Types:**

- Front of House
- Barista
- Housekeeping
- Bar staff

**Season:** All Year Round



TOP  
LOCATION

## SOUTH WEST

**Location:**  
**Rhinefield House Hotel**  
**The New Forest, Hampshire**

**Staff Housing:** Yes

**Job Types:**

- Front of House
- Barista
- Housekeeping
- Bar staff

**Season:** All Year Round



## MIDLANDS

**Location:**  
**Ettington Park Hotel**  
**Stratford-upon-Avon**

**Staff Housing:** Yes

**Job Types:**

- Front of House
- Barista
- Housekeeping
- Bar staff

**Season:** All Year Round



## MIDLANDS

**Location:**  
**Fawsley Hall Hotel & Spa**  
**Fawsley, Northamptonshire**

**Staff Housing:** Yes

**Job Types:**

- Front of House
- Barista
- Housekeeping
- Bar staff

**Season:** All Year Round



## MIDLANDS

**Location:**  
**New Hall Hotel & Spa**  
**Sutton Coldfield, West Midlands**

**Staff Housing:** Yes

**Job Types:**

- Front of House
- Barista
- Housekeeping
- Bar staff

**Season:** All Year Round



## MIDLANDS

**Location:**  
**Stanbrook Abbey Hotel**  
**Callow End, Worcester**

**Staff Housing:** Yes

**Job Types:**

- Front of House
- Barista
- Housekeeping
- Bar staff

**Season:** All Year Round



## CHESHIRE & YORKSHIRE

**Location:**  
**Crathorne Hall Hotel**  
**Yarm, North Yorkshire**

**Staff Housing:** Yes

**Job Types:**

- Front of House
- Barista
- Housekeeping
- Bar staff

**Season:** All Year Round



## CHESHIRE & YORKSHIRE

**Location:**  
**Rookery Hall Hotel & Spa**  
**Nantwich, Cheshire**

**Staff Housing:** Yes

**Job Types:**

- Front of House
- Barista
- Housekeeping
- Bar staff

**Season:** All Year Round



## CHESHIRE & YORKSHIRE

**Location:**  
**Wood Hall Hotel & Spa**  
**Wetherby**

**Staff Housing:** Yes

**Job Types:**

- Front of House
- Barista
- Housekeeping
- Bar staff

**Season:** All Year Round



# JAPOW PROGRAMME

**O**ur JAPOW programme is your one-stop-shop to one of the greatest experiences of your life! We have been lucky enough to secure jobs in Japan's most popular Ski Resorts & Towns! What's best is there are no Japanese language skills required for almost all jobs!

**\$1199**



## ELIGIBILITY

- ▶ Must be 20-30 ▶ Aus/NZ/UK Passport Holder ▶ No Criminal Convictions or DUI's ▶ Work Dec 1st – April 1st
- ▶ You must show a genuine interest in the Japanese Culture & learning basic Japanese

## WHAT DO I GET?

- |  |  |
|--|--|
| <ul style="list-style-type: none"> <li>✓ Job offer pre-departure</li> <li>✓ Free season lift pass</li> <li>✓ Money back guarantee</li> <li>✓ Japanese online language course</li> <li>✓ Guaranteed staff housing*</li> <li>✓ Step-by-step visa assistance</li> <li>✓ Meet &amp; greet drinks on arrival</li> </ul> | <ul style="list-style-type: none"> <li>✓ Free volunteering jobs worldwide</li> <li>✓ Orientation on arrival to Tokyo</li> <li>✓ 1st night free accommodation-Tokyo</li> <li>✓ Transfer to resort from closest train station</li> <li>✓ Guide to living and working in Tokyo</li> <li>✓ Closed facebook groups</li> <li>✓ Discounts on lessons &amp; rentals</li> </ul> |
|--|--|



## HOW TO APPLY

